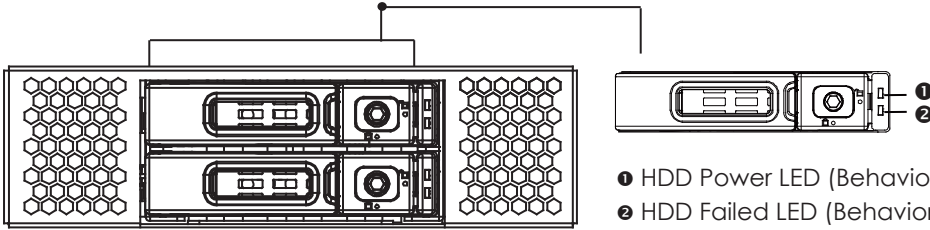


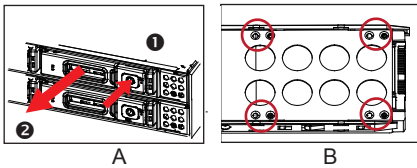
## Front Panel Indicators



- ❶ HDD Power LED (Behavior: power-on: blue/active: blink)
- ❷ HDD Failed LED (Behavior: red)

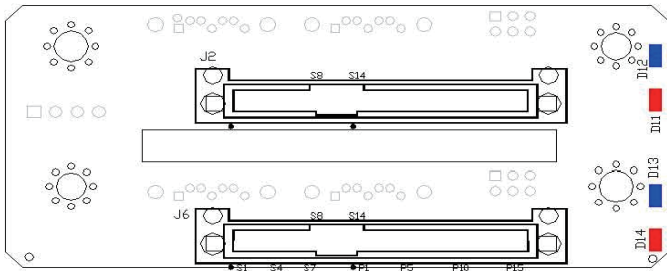
## Installing HDD

### Install 2.5" Hot-swap HDD

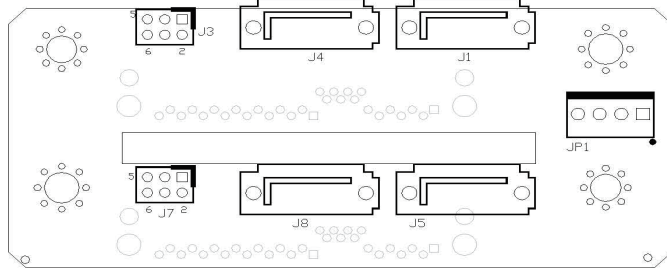


- A. Release a drive tray by pressing the unlock button and pinching the lock lever slightly and pulling out the drive tray.
- B. Place the 2.5" HDD on the tray and then secure it with four screws on the bottom. Insert the drive carrier into its bay. Push the tray lever until it clicks.

## Backplane Settings



- J2 : SAS HDD Receptacle Connector-HDD1
- J6 : SAS HDD Receptacle Connector-HDD2
- D12 & D13 : HDD1/2 Preset/Activity LED [blue]
- D11 & D14 : HDD1/2 Fault LED[red]



JP1 : PWR Input connector

Pin	Description	Pin	Description
1	+12V	2	GND
3	GND	4	+5V

J1: HDD1 port A (SAS/SATA)

J4: HDD1 port B (SAS)

J3: HDD1 pin LED header

Pin	Description	Pin	Description
1	HDD1 Fault LED(-)	2	HDD Fault LED input- Low active
3	LED(+)	4	GND
5	HDD1 Activity LED(+)	6	HDD Activity LED output active

J5: HDD2 port A (SAS/SATA)

J8: HDD2 port B (SAS)

J7: HDD2 LED pin header

Pin	Description	Pin	Description
1	HDD2 Fault LED(-)	2	HDD Fault LED input- Low active
3	LED(+)	4	GND
5	HDD2 Activity LED(+)	6	HDD Activity LED output active